



## **Arboricultural Assessment and Tree Management Plan**

### **Site Address:**

Willsmere Estate (External Area managed by Parks Victoria)  
1 Wiltshire Drive, Kew  
Victoria 3110

### **Report Commissioned By:**

Kristen Riddell  
Senior Owners Corporation Manager  
MICM Property

### **Prepared By:**

Mr. Joel Hinck  
Diploma Hort/Arb

Tuesday, 11<sup>th</sup> September 2018

## **Contents**

<b>Contents .....</b>	<b>1</b>
<b>Introduction .....</b>	<b>2</b>
<b>1. Key Objectives.....</b>	<b>3</b>
<b>2. Methodology .....</b>	<b>3</b>
<b>3. Observations .....</b>	<b>4</b>
<b>4. Tree Management Requirements .....</b>	<b>5</b>
<b>Appendix 1: Site Plan .....</b>	<b>7</b>
<b>Appendix 2: Tree Details Database .....</b>	<b>8</b>
<b>Appendix 3: Assumptions and Limiting Conditions.....</b>	<b>15</b>

## Introduction

This assessment, report and subsequent tree management plan has been undertaken at the request of Kristen Riddell of Melbourne Inner City Management (MICM). The report contents should not be made available to any other parties, other than governing bodies, responsible authorities and affected parties, unless by the express permission of McLeod Trees Pty Ltd.

This audit aims to comment on the tree health, structure and potential hazards associated with the tree population and provide a detailed database of the works required for each individual tree, along with its associated priority rating.

The inspection and observations were undertaken in August and September of 2018, with only trees of significant size included in the scope of this audit. New plantings, smaller trees, shrubs and hedges were not included within the scope of this assessment due to their limited hazard potential.

All inspections were made from the ground only, with no aerial inspections being undertaken as per the scope of this audit. All details were accurate and correct at this time.

The audit has been developed to assist the managers of the subject site to maintain and manage the risks associated with the tree population. This audit is designed to be used as a risk management tool through regular maintenance of the trees. Using the priority of works from urgent to low; these associated risks can be managed and reduced.

The results and recommendations are outlined in the Tree Database Spreadsheet and provide a detail of all trees and associated recommended works in an order of hazard rating priority from Urgent to Low.

## 1. Key Objectives

- 1.1. To inspect and assess the trees located in a parcel of land owned by Willsmere Estate. The land located to the South of the subject site is owned by Willsmere Estate and is currently leased and managed by Parks Victoria.
- 1.2. To provide information on the species, dimensions, health, structure, condition, and provide an associated hazard rating.
- 1.3. To provide recommendations and management strategies, including any works required to reduce the risk to persons or property, in an order of priority from Low to Urgent.

## 2. Methodology

- 2.1. A site inspection was undertaken on the 31<sup>st</sup> of August, and the 3<sup>rd</sup> and 4<sup>th</sup> of September 2018. The nominated trees were inspected from the ground only and observations made of the growing environment and surrounding area. The trees were not climbed, and no samples of the tree or site soil were taken.
- 2.2. Details of each tree, including GPS location, were taken on site using a hand-held data collection device.
- 2.3. Each tree was tagged with an individually numbered Tree ID Tag, the number of which corresponds with the Tree ID number shown on the Site Plan (Appendix 1) and listed in the Tree Details Database spreadsheet (Appendix 2).
- 2.4. Observations were made of the trees to determine their health and condition, with measurements taken to establish height and trunk dimensions.
- 2.5. Each tree was assessed and classified based on its arboricultural hazard rating, which relates to a combination of factors including health, structure and condition and is based on a modified version of the widely accepted method for tree hazard evaluation promoted by the International Society of Arboriculture.
- 2.6. This method developed by Matheny & Clarke (1994) and provides a risk hazard rating for each tree according to three variables:
  - Likelihood of Failure
  - Size of Part Likely to Fail
  - Target OccupancyThe combination of these three variables provides an associated hazard rating between 3 being the lowest and 12 being the highest, which is then converted to a hazard rating of Urgent (12), High (9 –

11), Medium (6 – 8) to Low (3 – 5) and can be incorporated into the properties tree management plan based on budget and time constraints.

2.7. As a general guide, the following timelines are recommended for work priority ratings.

- Urgent (Blue) – Should be undertaken immediately, these trees represent an immediate hazard.
- High (Red) – Should be undertaken within 6 months
- Medium (Orange) – Should be undertaken within 6 – 24 months
- Low (Yellow) – Basic recommended works which should be undertaken within 24 – 36 months.

2.8. All tree assessments were undertaken by consulting arborist Joel Hinck.

### **3. Observations**

3.1. The property in question is referred to as Willsmere Estate, and is a unique heritage listed residential estate located within the suburb of Kew.

3.2. The assessment area covered in this report is a parcel of land owned by Willsmere Estate, located to the South of the Estate. The land is currently leased and managed by Parks Victoria.

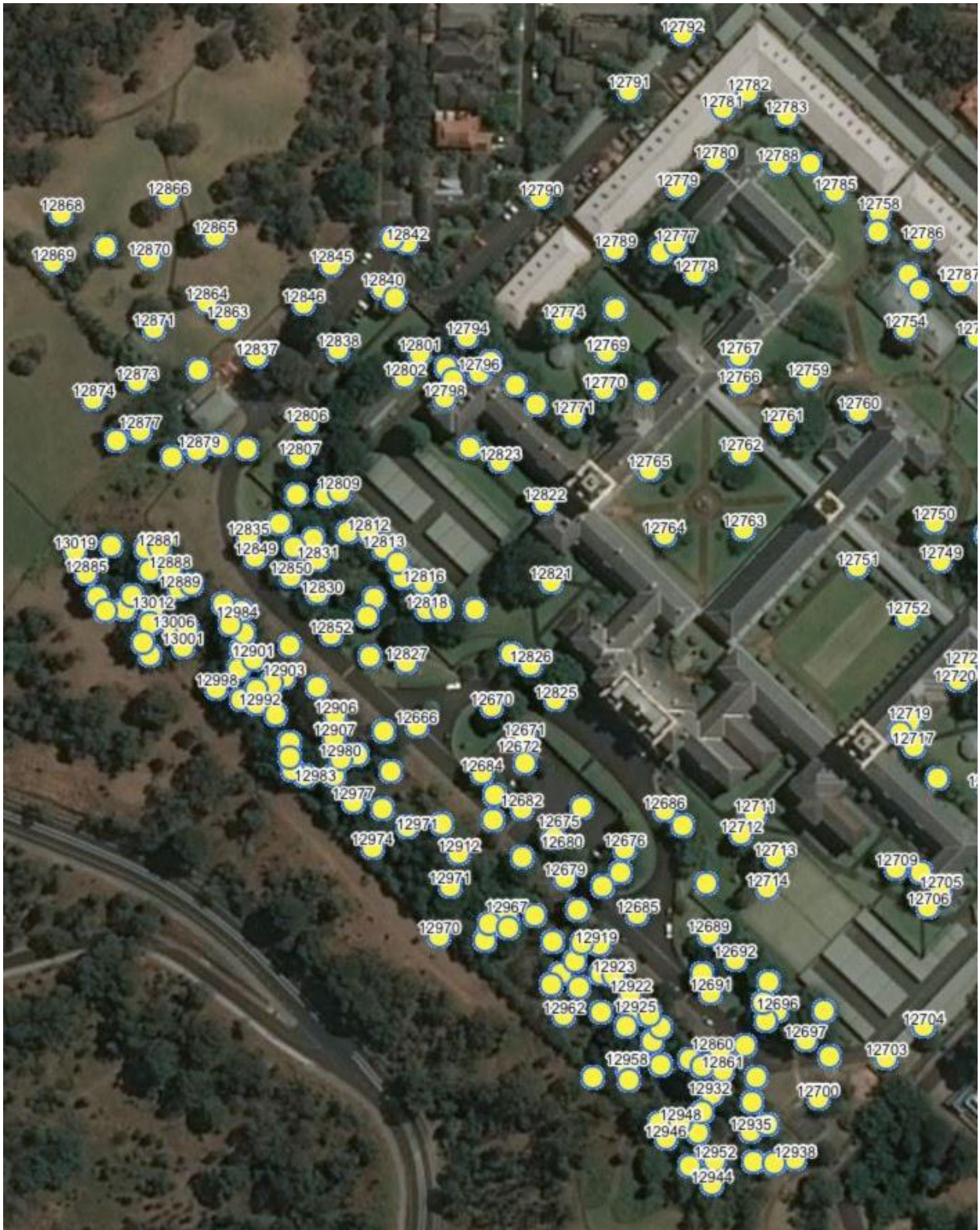
3.3. A total of 153 trees, and/or groups of trees were visually assessed, tagged and included in the audit and management plan.

## 4. Tree Management Requirements

- 4.1. The management of the trees, and associated hazards, forms the basis of this audit and recommended works package, based on a priority rating from Urgent to Low.
- 4.2. Harris Matheny and Clarke (2004) note that a tree related hazard is defined by the presence of a tree with an elevated potential for failure (i.e. Defects or other factors that predispose it to failure are present), along with a target of value that might be injured or damaged in the event of likely failure.
- 4.3. Risk is quantified by the value of the target and the degree of damage that it might sustain. These authors also note that almost all trees have some degree of associated hazard, and that the retention of larger trees implies the acceptance of a certain degree of risk.
- 4.4. A tree's worthiness of retention is based upon a number of criteria, taking into consideration such factors as health, condition and structure, as well as age, species, location and other factors which may affect the long-term tenure of the tree.
- 4.5. The existing trees on the site could be considered an opportunity or a constraint within the context of future management of the property; however, this would depend on many factors. The condition of the trees, the types of trees present and their location on the site are a few of the issues that may be considered when assessing which trees should be retained.
- 4.6. The possible retention and management of trees in the landscape relies on more substantial criteria than simply perceived visual benefits, although this is certainly considered. Issues such as tree health, structure and stability are fundamental and primary considerations in the process of identifying trees that could be potentially retained in the long term. These attributes are assessed using risk management concepts as a platform and they assist with determining the retention value of individual trees.
- 4.7. Importantly, tree removal should not always be considered a negative issue. Retention for retention's sake is a pointless activity if there is not a high possibility that the tree will not only survive but will be viable in the longer term (Hitchmough, 1994).
- 4.8. The recommended works comprise in some instances of complete tree removal, as well as various pruning works and arboricultural techniques such as deadwood removal, weight reduction pruning, canopy thinning and selective branch or sectional removal.

- 4.9. Weight reduction and canopy thinning is recommended where over extended lateral limbs display excessive weight and result in adverse leverage forces being exerted on the branch or fork union resulting in a potential for failure. Weight reduction works reduce the pressure exerted on these limbs which in turn increases the useful life expectancy by preventing such failure. Canopy thinning reduces the 'sail area' forces being applied to the outer canopy, and allows for improved wind flow through the canopy, further reducing the potential for limb shed or complete wind throw and failure of the tree at ground level.
- 4.10. All works which are recommended must only be undertaken by fully qualified and competent arborists, using non-invasive climbing methods and pruning techniques to meet those of the Australian Standard for Amenity Tree Pruning (AS 4373 – 2007 Pruning of Amenity Trees).
- 4.11. Works should be undertaken in accordance with the guidelines as outlined in the works database (Appendix 2) and should be documented upon completion, with a revised version of the audit and associated completed works provided.
- 4.12. Whilst the tree audit and management plan aims to identify all associated risks which are evident from ground level inspection, there may be further potential risks which are unseeable or undetectable, such as tree defects in the upper canopy which are not visible from the ground, or underground hazards which have not been presented to the inspecting arborist, such as underground trenching, changes to soil profiles and associated root damage.
- 4.13. During the undertaking of all works, aerial inspections should be undertaken by the climbing arborist, any further tree defects detected throughout this time will be made aware to the property managers and further management works may be required or recommended.
- 4.14. Due to the constant changing nature of the environment and surrounding location, it is recommended regular inspections be undertaken to identify any changes to tree health, structure and condition, and the audit database be updated at a minimum of every 2 years.
- 4.15. The significant size of the site provides the opportunity for future replanting, with the healthiest tree populations representing all age classes. A planting program should be developed and implemented in order to ensure an ongoing healthy tree population, adequately replacing trees which have been removed prior and any subsequently removed in the future.

# Appendix 1: Site Plan





## Appendix 2: Tree Details Database

Tree #	Genus	Species	Common Name	DBH (mm)	Height (m)	Health	Structure	Condition	Age	Observations	Failure Potential	Size of Part	Target Occupancy	Hazard Score	Works Required	Recommended Works
12907	<i>Eucalyptus</i>	<i>camaldulensis</i>	River Red Gum	750	16	Good	Fair	Fair	Mature	Constant target presence, Leaning habit, Minor deadwood	2 - Moderate	2. Size 15-45cm	4 - Constant	8	Pruning	Weight reduce , Remove deadwood, Perform crown works, Perform aerial inspection
12910	<i>Pinus</i>	<i>radiata</i>	Monterey Pine	1040	9	Fair	Poor	Poor	Mature	Bifurcated with swelling and included bark, Lopped tree, Previously failed limbs	2 - Moderate	3. Size 45-75cm	3 - Frequent	8	Removal	Remove tree
12901	<i>Quercus</i>	<i>robur</i>	English Oak	740	12	Poor	Poor	Poor	Mature	Basal wound present, Decay in branch , Decay in stem , Dieback in canopy, Hazardous tree	3 - High	3. Size 45-75cm	1 - Occasional	7	Removal	Remove tree
12905	<i>Eucalyptus</i>	<i>camaldulensis</i>	River Red Gum	970	15	Fair	Fair	Fair	Mature	Basal wound present, Bifurcated with swelling and included bark, Decay in branch , Decay in stem , Minor deadwood, Previously failed limbs	3 - High	2. Size 15-45cm	2 - Intermittent	7	Pruning	Weight reduce , Remove deadwood, Perform crown works, Monitor attachments, Monitor health
12940	<i>Acacia</i>	<i>implexa</i>	Lightwood	310	8	Fair	Poor	Fair	Mature	Bifurcated with swelling and included bark, Has caused infrastructure damage, Hazardous tree, Leaning habit	2 - Moderate	2. Size 15-45cm	3 - Frequent	7	Removal	Remove tree
12864	<i>Quercus</i>	<i>robur</i>	English Oak	640	9	Poor	Fair	Fair	Mature	Decay in branch , Decay in stem , Previously failed limbs, Split in stem or branch	2 - Moderate	2. Size 15-45cm	2 - Intermittent	6	Pruning	Remove deadwood, Perform crown works, Monitor decay, Monitor health
12867	<i>Quercus</i>	<i>robur</i>	English Oak	910	9	Fair	Fair	Fair	Mature	Decay in branch , Decay in stem , Previously failed limbs, Split in stem or branch	3 - High	2. Size 15-45cm	1 - Occasional	6	Pruning	Weight reduce , Remove deadwood, Perform crown works, Monitor attachments, Monitor decay, Monitor health
12871	<i>Quercus</i>	<i>robur</i>	English Oak	650	9	Good	Fair	Good	Mature	Decay in branch , Heavy lateral branches, Minor deadwood	2 - Moderate	2. Size 15-45cm	2 - Intermittent	6	Pruning	Weight reduce , Remove deadwood, Perform crown works, Monitor decay, Monitor health
12878	<i>Acacia</i>	<i>mearnsii</i>	Black Wattle	370	8	Fair	Poor	Fair	Mature	Bifurcated form, Borer damage present, Decay in stem , Previously failed limbs	2 - Moderate	1. Less than 15cm	3 - Frequent	6	Pruning	Remove deadwood, Perform crown works, Perform property clearance pruning
12881	<i>Cedrus</i>	<i>deodara</i>	Himalayan Cedar	560	15	Good	Fair	Good	Mature	Excessive deadwood, Heavy lateral branches, Minor deadwood, Previously failed limbs	2 - Moderate	1. Less than 15cm	3 - Frequent	6	Pruning	Weight reduce , Remove deadwood, Perform crown works
12892	<i>Acacia</i>		Acacia sp.	340	10	Dead	Poor	Poor	Mature	Hazardous tree	3 - High	2. Size 15-45cm	1 - Occasional	6	Removal	Remove tree
12912	<i>Corymbia</i>	<i>citriodora</i>	Lemon Scented Gum	710	14	Fair	Fair	Fair	Mature	Decay in branch , Heavy lateral branches, Minor deadwood, Previously failed limbs	3 - High	2. Size 15-45cm	1 - Occasional	6	Pruning	Weight reduce , Remove deadwood, Perform crown works, Monitor health
12952	<i>Acacia</i>	<i>implexa</i>	Lightwood	210	11	Dead	Poor	Poor	Mature	Hazardous tree, Leaning habit	3 - High	1. Less than 15cm	2 - Intermittent	6	Removal	Remove tree
12865	<i>Corymbia</i>	<i>maculata</i>	Spotted Gum	590	13	Good	Fair	Good	Mature	Co dominant stems, Heavy lateral branches, Minor deadwood	2 - Moderate	2. Size 15-45cm	1 - Occasional	5	Pruning	Remove deadwood, Perform crown works
12866	<i>Eucalyptus</i>	<i>polyanthemus</i>	Red Box	640	11	Good	Fair	Good	Mature	Bifurcated form, Bifurcated with swelling and included bark, Minor deadwood, Unfavourable attachments	2 - Moderate	2. Size 15-45cm	1 - Occasional	5	Pruning	Remove deadwood, Perform crown works, Monitor attachments
12868	<i>Quercus</i>	<i>robur</i>	English Oak	750	9	Fair	Fair	Fair	Mature	Decay in branch , Decay in stem , Heavy lateral branches, Minor deadwood, Previously failed limbs	2 - Moderate	2. Size 15-45cm	1 - Occasional	5	Pruning	Weight reduce , Remove deadwood, Perform crown works, Monitor decay, Monitor health
12869	<i>Quercus</i>	<i>robur</i>	English Oak	740	9	Fair	Fair	Fair	Mature	Decay in branch , Decay in stem , Minor deadwood, Previously failed limbs	2 - Moderate	2. Size 15-45cm	1 - Occasional	5	Pruning	Weight reduce , Remove deadwood, Perform crown works, Monitor decay, Monitor health
12877	<i>Pinus</i>	<i>radiata</i>	Monterey Pine	840	15	Fair	Fair	Fair	Mature	Heavy lateral branches, Leaning habit, Minor deadwood	2 - Moderate	2. Size 15-45cm	1 - Occasional	5	Pruning	Weight reduce , Remove deadwood, Perform crown works
12879	<i>Acacia</i>	<i>mearnsii</i>	Black Wattle	260	7	Poor	Poor	Poor	Mature	Borer damage present, Decay in branch , Decay in stem	3 - High	2. Size 15-45cm	1 - Occasional	5	Removal	Remove tree
12887	<i>Quercus</i>	<i>canariensis</i>	Algerian Oak	440	12	Fair	Fair	Fair	Mature	Basal wound present, Dieback in canopy, Minor deadwood	2 - Moderate	1. Less than 15cm	2 - Intermittent	5	Pruning	Remove deadwood, Perform crown works, Monitor health
12891	<i>Quercus</i>	<i>canariensis</i>	Algerian Oak	610	12	Good	Fair	Fair	Mature	Co dominant stems, Minor deadwood	2 - Moderate	1. Less than 15cm	2 - Intermittent	5	Pruning	Remove deadwood, Perform crown works

Tree #	Genus	Species	Common Name	DBH (mm)	Height (m)	Health	Structure	Condition	Age	Observations	Failure Potential	Size of Part	Target Occupancy	Hazard Score	Works Required	Recommended Works
12893	<i>Quercus</i>	<i>canariensis</i>	Algerian Oak	390	12	Fair	Fair	Fair	Mature	Leaning habit, Minor deadwood, Suppressed canopy	2 - Moderate	1. Less than 15cm	2 - Intermittent	5	Pruning	Remove deadwood, Perform crown works, Monitor health
12895	<i>Quercus</i>	<i>canariensis</i>	Algerian Oak	510	14	Good	Good	Fair	Mature	Bifurcated form, Co dominant stems, Minor deadwood	1 - Low	2. Size 15-45cm	2 - Intermittent	5	Pruning	Remove deadwood, Perform crown works, Perform property clearance pruning
12896	<i>Quercus</i>	<i>canariensis</i>	Algerian Oak	680	15	Good	Fair	Good	Mature	Bifurcated form, Heavy lateral branches, Minor deadwood, Multiple stems	2 - Moderate	2. Size 15-45cm	1 - Occasional	5	Pruning	Weight reduce , Remove deadwood, Perform crown works
12900	<i>Quercus</i>	<i>robur</i>	English Oak	730	13	Fair	Fair	Fair	Mature	Decay in branch , Decay in stem , Dieback in canopy, Previously failed limbs	2 - Moderate	2. Size 15-45cm	1 - Occasional	5	Pruning	Remove deadwood, Perform crown works, Monitor decay, Monitor health
12903	<i>Quercus</i>		Quercus sp.	280	7	Dead	Poor	Poor	Semi mature	Basal wound present, Decay in stem	2 - Moderate	2. Size 15-45cm	1 - Occasional	5	Removal	Remove tree
12904	<i>Quercus</i>	<i>robur</i>	English Oak	570	8	Poor	Poor	Poor	Mature	Decay in branch , Decay in stem , Habitat tree, Hazardous tree	2 - Moderate	2. Size 15-45cm	1 - Occasional	5	Removal	Remove tree
12914	<i>Ailanthus</i>	<i>altissima</i>	Tree Of Heaven	340	8	Dead	Poor	Poor	Mature	Hazardous tree	3 - High	1. Less than 15cm	1 - Occasional	5	Removal	Remove tree
12916	<i>Pittosporum</i>	<i>undulatum</i>	Sweet Pittosporum	280	8	Dead	Poor	Poor	Mature	Decay in stem , Hazardous tree, Weed species, Represents a stand of dead trees of the same species	2 - Moderate	1. Less than 15cm	2 - Intermittent	5	Removal	Remove several dead trees
12917	<i>Arbutus</i>	<i>unedo</i>	Irish Strawberry	650	8	Fair	Poor	Fair	Mature	Basal wound present, Bifurcated form, Decay in stem , Excessive deadwood, Heavy lateral branches	2 - Moderate	2. Size 15-45cm	1 - Occasional	5	Pruning	Weight reduce , Remove deadwood, Perform crown works, Monitor decay, Monitor health
12921	<i>Pittosporum</i>	<i>undulatum</i>	Sweet Pittosporum	260	8	Dead	Poor	Poor	Mature	Basal wound present, Hazardous tree, Represents two trees of the same species, similar size and condition	3 - High	1. Less than 15cm	1 - Occasional	5	Removal	Remove tree
12928	<i>Cupressus</i>	<i>arizonica</i>	Arizona Cypress	540	12	Fair	Fair	Fair	Mature	Bifurcated with swelling and included bark, Excessive deadwood, Leaning habit	2 - Moderate	1. Less than 15cm	2 - Intermittent	5	Pruning	Weight reduce , Remove deadwood, Perform crown works, Monitor attachments
12931	<i>Quercus</i>	<i>robur</i>	English Oak	840	14	Fair	Fair	Fair	Mature	Decay in branch , Decay in stem , Heavy lateral branches, Previously failed limbs	2 - Moderate	2. Size 15-45cm	1 - Occasional	5	Pruning	Weight reduce , Remove deadwood, Perform crown works, Monitor health
12932	<i>Quercus</i>	<i>robur</i>	English Oak	810	12	Fair	Fair	Fair	Mature	Decay in branch , Decay in stem , Dieback in canopy, Previously failed limbs	2 - Moderate	2. Size 15-45cm	1 - Occasional	5	Pruning	Remove deadwood, Perform crown works, Monitor decay, Monitor health
12951	<i>Acacia</i>	<i>implexa</i>	Lightwood	230	11	Dead	Fair	Poor	Mature	Hazardous tree	3 - High	1. Less than 15cm	1 - Occasional	5	Removal	Remove tree
12953	<i>Quercus</i>	<i>robur</i>	English Oak	430	11	Fair	Fair	Fair	Mature	Decay in branch , Dieback in canopy, Minor deadwood	2 - Moderate	1. Less than 15cm	2 - Intermittent	5	Pruning	Remove deadwood, Perform crown works, Monitor health
12962	<i>Pittosporum</i>	<i>undulatum</i>	Sweet Pittosporum	440	10	Dead	Poor	Poor	Mature	Basal wound present, Bifurcated form, Co dominant stems, Decay in stem , Hazardous tree	3 - High	1. Less than 15cm	1 - Occasional	5	Removal	Remove tree
12975	<i>Ficus</i>	<i>macrophylla</i>	Morton Bay Fig	1200	14	Good	Fair	Good	Mature	Bifurcated form, Co dominant stems, Decay in branch , Heavy lateral branches	2 - Moderate	1. Less than 15cm	2 - Intermittent	5	Pruning	Remove deadwood, Perform crown works, Monitor attachments
12977	<i>Ailanthus</i>	<i>altissima</i>	Tree Of Heaven	480	8	Poor	Poor	Poor	Mature	Basal wound present, Decay in stem , Hazardous tree	3 - High	1. Less than 15cm	1 - Occasional	5	Removal	Remove tree
12986	<i>Arbutus</i>	<i>unedo</i>	Irish Strawberry	460	7	Fair	Fair	Fair	Mature	Decay in branch , Decay in stem , Dieback in canopy, Excessive deadwood, Multiple stems	2 - Moderate	2. Size 15-45cm	1 - Occasional	5	Pruning	Remove deadwood, Perform crown works, Monitor decay, Monitor health
12988	<i>Pittosporum</i>	<i>undulatum</i>	Sweet Pittosporum	170	7	Dead	Poor	Poor	Semi mature	Dead tree	2 - Moderate	1. Less than 15cm	2 - Intermittent	5	Removal	Remove tree
12990	<i>Pinus</i>	<i>radiata</i>	Monterey Pine	760	16	Good	Fair	Fair	Mature	Co dominant stems, Minor deadwood, Unfavourable attachments	2 - Moderate	2. Size 15-45cm	1 - Occasional	5	Pruning	Remove deadwood, Perform crown works, Monitor attachments
13004	<i>Quercus</i>	<i>robur</i>	English Oak	240	12	Fair	Fair	Fair	Semi mature	Decay in branch , Decay in stem , Dieback in canopy	2 - Moderate	2. Size 15-45cm	1 - Occasional	5	Pruning	Remove deadwood, Perform crown works

Tree #	Genus	Species	Common Name	DBH (mm)	Height (m)	Health	Structure	Condition	Age	Observations	Failure Potential	Size of Part	Target Occupancy	Hazard Score	Works Required	Recommended Works
13008	<i>Quercus</i>	<i>robur</i>	English Oak	1100	14	Good	Fair	Fair	Mature	Decay in branch , Decay in stem , Dieback in canopy, Heavy lateral branches	2 - Moderate	1. Less than 15cm	2 - Intermittent	5	Pruning	Remove deadwood, Perform crown works, Perform aerial inspection, Monitor decay, Monitor health
13012	<i>Quercus</i>	<i>robur</i>	English Oak	280	12	Fair	Fair	Fair	Semi mature	Decay in branch , Decay in stem , Dieback in canopy	2 - Moderate	1. Less than 15cm	2 - Intermittent	5	Pruning	Remove deadwood, Perform crown works, Monitor health
13016	<i>Quercus</i>	<i>robur</i>	English Oak	340	9	Poor	Poor	Poor	Semi mature	Decay in stem , Dieback in canopy, Split in stem or branch	2 - Moderate	2. Size 15-45cm	1 - Occasional	5	Removal	Remove tree
13017	<i>Quercus</i>	<i>robur</i>	English Oak	380	12	Fair	Fair	Fair	Mature	Decay in branch , Decay in stem , Excessive deadwood, Previously failed limbs	2 - Moderate	2. Size 15-45cm	1 - Occasional	5	Pruning	Remove deadwood, Perform crown works, Monitor decay, Monitor health
12870	<i>Quercus</i>	<i>robur</i>	English Oak	480	8	Fair	Fair	Fair	Mature	Decay in branch , Decay in stem , Dieback in canopy, Lopped tree, Minor deadwood	2 - Moderate	1. Less than 15cm	1 - Occasional	4	Pruning	Remove deadwood, Perform crown works, Monitor decay, Monitor health
12872	<i>Schinus</i>	<i>molle</i>	Peppercorn	360	6	Good	Fair	Fair	Semi mature	Bifurcated form, Form could be improved, Minor deadwood, Unfavourable attachments	2 - Moderate	1. Less than 15cm	1 - Occasional	4	Pruning	Formative prune, Monitor attachments
12874	<i>Schinus</i>	<i>molle</i>	Peppercorn	430	9	Good	Fair	Good	Mature	Bifurcated form, Minor deadwood	1 - Low	1. Less than 15cm	2 - Intermittent	4	Pruning	Remove deadwood, Perform crown works
12875	<i>Schinus</i>	<i>molle</i>	Peppercorn	510	10	Good	Fair	Good	Mature	Co dominant stems, Form could be improved, Minor deadwood	1 - Low	2. Size 15-45cm	1 - Occasional	4	Pruning	Remove deadwood, Perform crown works, Formative prune
12876	<i>Cedrus</i>	<i>deodara</i>	Himalayan Cedar	570	12	Fair	Fair	Fair	Mature	Excessive deadwood, Leaning habit, Suppressed canopy	2 - Moderate	1. Less than 15cm	1 - Occasional	4	Pruning	Remove deadwood, Perform crown works, Monitor health
12880	<i>Acacia</i>	<i>mearnsii</i>	Black Wattle	260	9	Good	Fair	Fair	Mature	Borer damage present, Form could be improved, Minor deadwood	2 - Moderate	1. Less than 15cm	1 - Occasional	4	Pruning	Remove deadwood, Formative prune
12882	<i>Cedrus</i>	<i>deodara</i>	Himalayan Cedar	490	16	Good	Fair	Good	Mature	Co dominant stems, Excessive deadwood	1 - Low	1. Less than 15cm	2 - Intermittent	4	Pruning	Remove deadwood, Perform crown works, Monitor attachments
12883	<i>Cedrus</i>	<i>deodara</i>	Himalayan Cedar	500	16	Good	Fair	Good	Mature	Excessive deadwood, Previously failed limbs	1 - Low	1. Less than 15cm	2 - Intermittent	4	Pruning	Remove deadwood, Perform crown works
12884	<i>Cedrus</i>	<i>deodara</i>	Himalayan Cedar	530	15	Good	Fair	Fair	Mature	Minor deadwood, Previously failed limbs	1 - Low	1. Less than 15cm	2 - Intermittent	4	Pruning	Remove deadwood, Perform crown works
12888	<i>Quercus</i>	<i>canariensis</i>	Algerian Oak	390	9	Fair	Fair	Fair	Mature	Decay in branch , Decay in stem , Excessive deadwood, Suppressed canopy	2 - Moderate	1. Less than 15cm	1 - Occasional	4	Pruning	Remove deadwood, Perform crown works, Monitor health
12889	<i>Arbutus</i>	<i>unedo</i>	Irish Strawberry	350	8	Fair	Fair	Fair	Mature	Co dominant stems, Excessive deadwood	1 - Low	1. Less than 15cm	2 - Intermittent	4	Pruning	Remove deadwood, Perform crown works, Monitor health
12890	<i>Acacia</i>	<i>implexa</i>	Lightwood	250	9	Fair	Fair	Fair	Mature	Dieback in canopy, Minor deadwood	2 - Moderate	1. Less than 15cm	1 - Occasional	4	Pruning	Remove deadwood, Perform crown works, Monitor health
12899	<i>Quercus</i>	<i>canariensis</i>	Algerian Oak	290	13	Good	Fair	Fair	Semi mature	Decay in branch , Leaning habit, Minor deadwood	2 - Moderate	1. Less than 15cm	1 - Occasional	4	Pruning	Remove deadwood, Perform crown works, Monitor health
12902	<i>Quercus</i>	<i>canariensis</i>	Algerian Oak	620	13	Fair	Fair	Fair	Mature	Decay in branch , Minor deadwood, Unfavourable attachments	1 - Low	1. Less than 15cm	2 - Intermittent	4	Pruning	Remove deadwood, Perform crown works, Monitor attachments, Monitor health
12906	<i>Pittosporum</i>		Pittosporum sp.	250	6	Fair	Fair	Fair	Mature	Bifurcated form, Dieback in canopy, Suppressed canopy	2 - Moderate	1. Less than 15cm	1 - Occasional	4	Pruning	Remove deadwood, Formative prune, Monitor attachments
12911	<i>Ailanthus</i>	<i>altissima</i>	Tree Of Heaven	320	7	Fair	Fair	Fair	Mature	Co dominant stems, Decay in branch , Dieback in canopy, Form could be improved, Multiple stems, Split in stem or branch	2 - Moderate	1. Less than 15cm	1 - Occasional	4	Pruning	Remove deadwood, Perform crown works, Formative prune, Monitor decay, Monitor health
12913	<i>Cupressus</i>	<i>arizonica</i>	Arizona Cypress	730	13	Good	Fair	Fair	Mature	Bifurcated with swelling and included bark, Co dominant stems, Excessive deadwood	2 - Moderate	1. Less than 15cm	1 - Occasional	4	Pruning	Remove deadwood, Perform crown works, Monitor attachments
12915	<i>Pittosporum</i>	<i>undulatum</i>	Sweet Pittosporum	410	8	Fair	Fair	Fair	Mature	Basal wound present, Decay in stem , Weed species	2 - Moderate	1. Less than 15cm	1 - Occasional	4	Removal	Remove tree
12920	<i>Syzygium</i>	<i>sp.</i>	Syzygium sp.	220	6	Poor	Fair	Fair	Mature	Basal wound present, Decay in stem , Dieback in canopy, Excessive deadwood	2 - Moderate	1. Less than 15cm	1 - Occasional	4	Removal	Remove tree
12922	<i>Acacia</i>	<i>implexa</i>	Black Wattle	340	11	Fair	Fair	Fair	Mature	Dieback in canopy, Excessive deadwood	2 - Moderate	1. Less than 15cm	1 - Occasional	4	Pruning	Remove deadwood, Perform crown works, Monitor health

Tree #	Genus	Species	Common Name	DBH (mm)	Height (m)	Health	Structure	Condition	Age	Observations	Failure Potential	Size of Part	Target Occupancy	Hazard Score	Works Required	Recommended Works
12923	<i>Acacia</i>	<i>implexa</i>	Lightwood	310	12	Fair	Fair	Fair	Mature	Dieback in canopy, Excessive deadwood	2 - Moderate	1. Less than 15cm	1 - Occasional	4	Pruning	Remove deadwood, Perform crown works, Monitor health
12925	<i>Acacia</i>	<i>implexa</i>	Lightwood	250	8	Fair	Poor	Fair	Mature	Basal wound present, Excessive deadwood	2 - Moderate	1. Less than 15cm	1 - Occasional	4	Pruning	Remove deadwood, Perform crown works, Monitor health
12926	<i>Cupressus</i>	<i>arizonica</i>	Arizona Cypress	740	14	Good	Fair	Fair	Mature	Bifurcated form, Co dominant stems, Minor deadwood	2 - Moderate	1. Less than 15cm	1 - Occasional	4	Pruning	Remove deadwood, Perform crown works
12927	<i>Cupressus</i>	<i>arizonica</i>	Arizona Cypress	620	12	Fair	Fair	Fair	Mature	Co dominant stems, Excessive deadwood	2 - Moderate	1. Less than 15cm	1 - Occasional	4	Pruning	Remove deadwood, Perform crown works
12929	<i>Cupressus</i>	<i>arizonica</i>	Arizona Cypress	460	11	Fair	Fair	Fair	Mature	Basal wound present, Bifurcated form, Co dominant stems, Dieback in canopy, Excessive deadwood	2 - Moderate	1. Less than 15cm	1 - Occasional	4	Pruning	Remove deadwood, Perform crown works, Monitor health
12930	<i>Cupressus</i>	<i>arizonica</i>	Arizona Cypress	560	12	Poor	Fair	Fair	Mature	Decay in branch , Dieback in canopy, Excessive deadwood	2 - Moderate	1. Less than 15cm	1 - Occasional	4	Pruning	Remove deadwood, Perform crown works, Monitor health
12934	<i>Arbutus</i>	<i>unedo</i>	Irish Strawberry	420	7	Poor	Fair	Fair	Mature	Decay in branch , Decay in stem , Dieback in canopy, Multiple stems	2 - Moderate	1. Less than 15cm	1 - Occasional	4	Pruning	Remove deadwood, Perform crown works, Monitor decay, Monitor health
12941	<i>Leptospermum</i>	<i>confertus</i>	Queensland Brush Box	280	7	Fair	Fair	Fair	Semi mature	Dieback in canopy, Multiple stems, Unfavourable attachments	2 - Moderate	1. Less than 15cm	1 - Occasional	4	Pruning	Remove deadwood, Perform crown works, Monitor health
12942	<i>Acacia</i>	<i>implexa</i>	Lightwood	180	7	Fair	Fair	Fair	Semi mature	Dieback in canopy, Excessive deadwood, Leaning habit, Represents a group of trees of the same species, similar size and condition	2 - Moderate	1. Less than 15cm	1 - Occasional	4	Pruning	Remove deadwood, Perform crown works, Monitor health
12943	<i>Quercus</i>	<i>canariensis</i>	Algerian Oak	470	9	Good	Fair	Fair	Mature	Bifurcated form, Minor deadwood	2 - Moderate	1. Less than 15cm	1 - Occasional	4	Pruning	Remove deadwood, Perform crown works
12944	<i>Quercus</i>	<i>canariensis</i>	Algerian Oak	270	8	Good	Fair	Fair	Semi mature	Form could be improved, Suppressed canopy	2 - Moderate	1. Less than 15cm	1 - Occasional	4	Pruning	Formative prune
12947	<i>Quercus</i>	<i>robur</i>	English Oak	610	10	Good	Fair	Fair	Mature	Decay in branch , Dieback in canopy, Heavy lateral branches	2 - Moderate	1. Less than 15cm	1 - Occasional	4	Pruning	Weight reduce , Remove deadwood, Perform crown works
12950	<i>Quercus</i>	<i>canariensis</i>	Algerian Oak	530	12	Fair	Fair	Fair	Mature	Decay in branch , Dieback in canopy	2 - Moderate	1. Less than 15cm	1 - Occasional	4	Pruning	Remove deadwood, Perform crown works, Monitor health
12954	<i>Quercus</i>	<i>robur</i>	English Oak	790	14	Good	Fair	Fair	Mature	Co dominant stems, Decay in branch , Minor deadwood, Previously failed limbs	2 - Moderate	1. Less than 15cm	1 - Occasional	4	Pruning	Remove deadwood, Perform crown works, Monitor health
12955	<i>Quercus</i>	<i>robur</i>	English Oak	640	12	Good	Fair	Fair	Mature	Bifurcated form, Co dominant stems, Minor deadwood	2 - Moderate	1. Less than 15cm	1 - Occasional	4	Pruning	Remove deadwood, Perform crown works, Monitor attachments
12956	<i>Acacia</i>	<i>implexa</i>	Lightwood	220	10	Dead	Poor	Poor	Mature	Borer damage present, Habitat tree	2 - Moderate	1. Less than 15cm	1 - Occasional	4	Removal	Remove tree
12957	<i>Quercus</i>	<i>robur</i>	English Oak	320	8	Fair	Poor	Fair	Semi mature	Basal wound present, Co dominant stems, Dieback in canopy, Multiple stems	2 - Moderate	1. Less than 15cm	1 - Occasional	4	Pruning	Remove deadwood, Perform crown works, Monitor health
12958	<i>Pittosporum</i>	<i>undulatum</i>	Sweet Pittosporum	440	8	Fair	Fair	Fair	Mature	Basal wound present, Bifurcated form, Weed species	2 - Moderate	1. Less than 15cm	1 - Occasional	4	Removal	Remove tree
12959	<i>Quercus</i>	<i>robur</i>	English Oak	680	11	Good	Fair	Fair	Mature	Heavy lateral branches, Minor deadwood	2 - Moderate	1. Less than 15cm	1 - Occasional	4	Pruning	Weight reduce , Remove deadwood, Perform crown works
12963	<i>Pittosporum</i>	<i>undulatum</i>	Sweet Pittosporum	360	7	Dead	Poor	Poor	Mature	Bifurcated form, Previously failed limbs	2 - Moderate	1. Less than 15cm	1 - Occasional	4	Removal	Remove tree
12964	<i>Ilex</i>	<i>sp.</i>	Ilex sp.	360	8	Fair	Fair	Fair	Mature	Basal wound present, Co dominant stems, Decay in stem , Leaning habit	2 - Moderate	1. Less than 15cm	1 - Occasional	4	Pruning	Remove deadwood, Perform crown works, Formative prune, Monitor decay
12965	<i>Pittosporum</i>	<i>undulatum</i>	Sweet Pittosporum	470	9	Dead	Poor		Mature	Basal wound present, Co dominant stems, Decay in stem	2 - Moderate	1. Less than 15cm	1 - Occasional	4	Removal	Remove tree
12966	<i>Quercus</i>	<i>canariensis</i>	Algerian Oak	560	12	Good	Fair	Good	Mature	Co dominant stems, Minor deadwood	2 - Moderate	1. Less than 15cm	1 - Occasional	4	Pruning	Remove deadwood, Perform crown works
12971	<i>Ficus</i>	<i>macrophylla</i>	Moreton Bay Fig	1050	14	Good	Fair	Good	Mature	Bifurcated form, Heavy lateral branches	2 - Moderate	1. Less than 15cm	1 - Occasional	4	Pruning	Remove deadwood, Perform crown works
12971	<i>Ficus</i>	<i>macrophylla</i>	Moreton Bay Fig	890	13	Fair	Fair	Fair	Mature	Bifurcated form, Co dominant stems, Decay in stem	2 - Moderate	1. Less than 15cm	1 - Occasional	4	Pruning	Weight reduce , Remove deadwood, Perform crown works, Monitor decay

Tree #	Genus	Species	Common Name	DBH (mm)	Height (m)	Health	Structure	Condition	Age	Observations	Failure Potential	Size of Part	Target Occupancy	Hazard Score	Works Required	Recommended Works
12974	<i>Pinus</i>	<i>radiata</i>	Monterey Pine	240	9	Good	Fair	Fair	Semi mature	Suppressed canopy, Unfavourable attachments	2 - Moderate	1. Less than 15cm	1 - Occasional	4	Pruning	Remove deadwood, Monitor attachments
12982	<i>Ailanthus</i>	<i>altissima</i>	Tree Of Heaven	240	7	Poor	Fair	Fair	Semi mature	Bifurcated form, Weed species	2 - Moderate	1. Less than 15cm	1 - Occasional	4	Removal	Remove tree
12983	<i>Pittosporum</i>	<i>undulatum</i>	Sweet Pittosporum	300	5	Dead	Poor	Poor	Mature	Bifurcated form, Decay in stem	2 - Moderate	1. Less than 15cm	1 - Occasional	4	Removal	Remove tree
12984	<i>Quercus</i>	<i>canariensis</i>	Algerian Oak	810	14	Good	Fair	Good	Mature	Bifurcated form, Co dominant stems, Minor deadwood	2 - Moderate	1. Less than 15cm	1 - Occasional	4	Pruning	Remove deadwood, Perform crown works
12985	<i>Quercus</i>	<i>canariensis</i>	Algerian Oak	910	14	Good	Fair	Fair	Mature	Co dominant stems, Included bark, Minor deadwood	2 - Moderate	1. Less than 15cm	1 - Occasional	4	Pruning	Remove deadwood, Perform crown works, Monitor attachments
12987	<i>Ficus</i>	<i>macrophylla</i>	Moreton Bay Fig	440	8	Fair	Fair	Fair	Mature	Co dominant stems, Decay in stem , Previously failed limbs, Unfavourable attachments	2 - Moderate	1. Less than 15cm	1 - Occasional	4	Pruning	Weight reduce , Perform crown works, Monitor attachments, Monitor decay
12989	<i>Quercus</i>	<i>canariensis</i>	Algerian Oak	690	14	Good	Fair	Fair	Mature	Co dominant stems, Minor deadwood, Multiple stems, Unfavourable attachments	2 - Moderate	1. Less than 15cm	1 - Occasional	4	Pruning	Remove deadwood, Perform crown works, Monitor attachments
12991	<i>Quercus</i>	<i>canariensis</i>	Algerian Oak	420	12	Fair	Fair	Fair	Semi mature	Co dominant stems, Minor deadwood	2 - Moderate	1. Less than 15cm	1 - Occasional	4	Pruning	Remove deadwood, Perform crown works
12994	<i>Quercus</i>	<i>canariensis</i>	Algerian Oak	560	15	Fair	Fair		Mature	Basal wound present, Dieback in canopy, Minor deadwood	2 - Moderate	1. Less than 15cm	1 - Occasional	4	Pruning	Remove deadwood, Perform crown works, Monitor health
12997	<i>Pittosporum</i>	<i>undulatum</i>	Sweet Pittosporum	240	6	Fair	Fair	Fair	Mature	Basal wound present, Bifurcated form, Weed species	2 - Moderate	1. Less than 15cm	1 - Occasional	4	Removal	Remove tree
12998	<i>Pittosporum</i>	<i>undulatum</i>	Sweet Pittosporum	360	7	Fair	Poor	Fair	Mature	Bifurcated form, Decay in stem , Weed species	2 - Moderate	1. Less than 15cm	1 - Occasional	4	Removal	Remove tree
12999	<i>Quercus</i>	<i>canariensis</i>	Algerian Oak	490	12	Fair	Fair	Fair	Mature	Dieback in canopy, Minor deadwood, Unfavourable attachments	2 - Moderate	1. Less than 15cm	1 - Occasional	4	Pruning	Remove deadwood, Perform crown works, Monitor health
13000	<i>Quercus</i>	<i>robur</i>	English Oak	420	11	Fair	Fair	Fair	Mature	Decay in stem , Excessive deadwood, Previously failed limbs	2 - Moderate	1. Less than 15cm	1 - Occasional	4	Pruning	Remove deadwood, Perform crown works, Monitor decay, Monitor health
13001	<i>Quercus</i>	<i>robur</i>	English Oak	600	14	Good	Fair	Fair	Mature	Decay in branch , Dieback in canopy, Unfavourable attachments	2 - Moderate	1. Less than 15cm	1 - Occasional	4	Pruning	Remove deadwood, Perform crown works, Monitor health
13002	<i>Quercus</i>	<i>robur</i>	English Oak	270	5	Poor	Poor	Poor	Semi mature	Decay in stem , Excessive deadwood, Previously failed limbs	2 - Moderate	1. Less than 15cm	1 - Occasional	4	Removal	Remove tree
13003	<i>Quercus</i>	<i>robur</i>	English Oak	360	13	Good	Fair	Fair	Mature	Decay in branch , Dieback in canopy, Minor deadwood	2 - Moderate	1. Less than 15cm	1 - Occasional	4	Pruning	Remove deadwood, Perform crown works, Monitor health
13005	<i>Quercus</i>	<i>robur</i>	English Oak	270	13	Fair	Fair	Fair	Semi mature	Decay in branch , Minor deadwood	2 - Moderate	1. Less than 15cm	1 - Occasional	4	Pruning	Remove deadwood, Perform crown works, Monitor decay
13006	<i>Quercus</i>	<i>robur</i>	English Oak	350	13	Fair	Fair	Fair	Semi mature	Decay in branch , Dieback in canopy	2 - Moderate	1. Less than 15cm	1 - Occasional	4	Pruning	Remove deadwood, Perform crown works, Monitor decay, Monitor health
13009	<i>Quercus</i>	<i>robur</i>	English Oak	290	10	Fair	Fair	Fair	Semi mature	Decay in stem , Leaning habit, Minor deadwood	2 - Moderate	1. Less than 15cm	1 - Occasional	4	Pruning	Remove deadwood, Perform crown works, Monitor decay
13010	<i>Quercus</i>	<i>robur</i>	English Oak	440	14	Good	Fair	Fair	Mature	Decay in branch , Hanger in canopy, Minor deadwood, Previously failed limbs	2 - Moderate	1. Less than 15cm	1 - Occasional	4	Pruning	Remove deadwood, Perform crown works, Monitor health
13011	<i>Quercus</i>	<i>canariensis</i>	Algerian Oak	620	14	Good	Fair	Fair	Mature	Decay in stem , Minor deadwood	2 - Moderate	1. Less than 15cm	1 - Occasional	4	Pruning	Remove deadwood, Perform crown works, Monitor health
13013	<i>Quercus</i>	<i>robur</i>	English Oak	340	13	Fair	Fair	Fair	Semi mature	Decay in branch , Decay in stem , Minor deadwood	2 - Moderate	1. Less than 15cm	1 - Occasional	4	Pruning	Remove deadwood, Perform crown works, Monitor health
13015	<i>Quercus</i>	<i>robur</i>	English Oak	330	10	Poor	Fair	Fair	Semi mature	Decay in branch , Decay in stem , Dieback in canopy, Previously failed limbs	2 - Moderate	1. Less than 15cm	1 - Occasional	4	Removal	Remove tree
13018	<i>Quercus</i>	<i>canariensis</i>	Algerian Oak	540	12	Good	Fair	Fair	Mature	Bifurcated with swelling and included bark, Co dominant stems, Minor deadwood	2 - Moderate	1. Less than 15cm	1 - Occasional	4	Pruning	Remove deadwood, Perform crown works, Monitor attachments
12873	<i>Brachychiton</i>	<i>populneus</i>	Kurrajong	520	12	Good	Fair	Good	Mature	Dieback in canopy, Minor deadwood, Previously failed limbs	1 - Low	1. Less than 15cm	1 - Occasional	3	No Works Required	No work required

Tree #	Genus	Species	Common Name	DBH (mm)	Height (m)	Health	Structure	Condition	Age	Observations	Failure Potential	Size of Part	Target Occupancy	Hazard Score	Works Required	Recommended Works
12885	<i>Quercus</i>	<i>canariensis</i>	Algerian Oak	380	12	Good	Fair	Good	Mature	Minor deadwood	1 - Low	1. Less than 15cm	1 - Occasional	3	Pruning	Remove deadwood, Perform crown works
12897	<i>Quercus</i>	<i>canariensis</i>	Algerian Oak	270	10	Fair	Fair	Fair	Semi mature	Minor deadwood, Suppressed canopy	1 - Low	1. Less than 15cm	1 - Occasional	3	Pruning	Remove deadwood, Perform crown works
12898	<i>Quercus</i>	<i>canariensis</i>	Algerian Oak	380	12	Good	Fair	Fair	Semi mature	Basal wound present, Co dominant stems, Decay in stem , Minor deadwood	1 - Low	1. Less than 15cm	1 - Occasional	3	Pruning	Remove deadwood, Perform crown works, Monitor decay
12908	<i>Arbutus</i>	<i>unedo</i>	Irish Strawberry	260	5	Good	Fair	Fair	Semi mature	Form could be improved, Multiple stems	1 - Low	1. Less than 15cm	1 - Occasional	3	Pruning	Remove deadwood, Formative prune
12909	<i>Quercus</i>	<i>canariensis</i>	Algerian Oak	190	9	Good	Fair	Good	Semi mature	Form could be improved	1 - Low	1. Less than 15cm	1 - Occasional	3	Pruning	Formative prune
12918	<i>Pittosporum</i>	<i>undulatum</i>	Sweet Pittosporum	230	6	Fair	Fair	Fair	Semi mature	Multiple stems, Weed species	1 - Low	1. Less than 15cm	1 - Occasional	3	Removal	Remove tree
12919	<i>Syzygium</i>	<i>sp.</i>	Syzygium sp.	310	8	Good	Fair	Fair	Mature	Bifurcated form, Minor deadwood	1 - Low	1. Less than 15cm	1 - Occasional	3	Pruning	Remove deadwood, Formative prune
12924	<i>Acacia</i>	<i>implexa</i>	Lightwood	270	5	Dead	Poor	Poor	Mature	Decay in stem , Previously failed limbs	1 - Low	1. Less than 15cm	1 - Occasional	3	Removal	Remove tree
12933	<i>Pittosporum</i>	<i>undulatum</i>	Sweet Pittosporum	180	5	Good	Fair	Good	Semi mature	Co dominant stems, Weed species	1 - Low	1. Less than 15cm	1 - Occasional	3	Removal	Remove tree
12935	<i>Pittosporum</i>	<i>undulatum</i>	Sweet Pittosporum	310	7	Good	Fair	Fair	Semi mature	Co dominant stems, Minor deadwood	1 - Low	1. Less than 15cm	1 - Occasional	3	Pruning	Remove deadwood
12936	<i>Acacia</i>	<i>implexa</i>	Lightwood	160	7	Fair	Fair	Fair	Semi mature	Dieback in canopy, Represents a group of trees of the same species and similar size and condition	1 - Low	1. Less than 15cm	1 - Occasional	3	Pruning	Remove deadwood, Perform crown works
12937	<i>Eucalyptus</i>	<i>leucoxylon</i>	Yellow Gum	140	5	Fair	Fair	Fair	Semi mature	Co dominant stems, Form could be improved	1 - Low	1. Less than 15cm	1 - Occasional	3	Pruning	Remove deadwood, Formative prune
12938	<i>Eucalyptus</i>	<i>sp.</i>	Eucalyptus sp.	190	8	Fair	Fair	Fair	Semi mature	Bifurcated form, Minor deadwood, Unfavourable attachments	1 - Low	1. Less than 15cm	1 - Occasional	3		Remove deadwood, Monitor attachments
12939	<i>Leptospermum</i>	<i>confertus</i>	Queensland Brush Box	210	6	Fair	Fair	Fair	Semi mature	Co dominant stems, Multiple stems, Previously failed limbs	1 - Low	1. Less than 15cm	1 - Occasional	3	Pruning	Remove deadwood, Perform crown works, Monitor attachments
12945	<i>Pinus</i>	<i>radiata</i>	Monterey Pine	760	13	Fair	Fair	Fair	Mature	Previous fallen tree	1 - Low	1. Less than 15cm	1 - Occasional	3	Remove Retain	No work required
12946	<i>Arbutus</i>	<i>unedo</i>	Irish Strawberry	220	8	Fair	Fair	Fair	Semi mature	Co dominant stems, Form could be improved	1 - Low	1. Less than 15cm	1 - Occasional	3	Pruning	Remove deadwood, Formative prune
12948	<i>Quercus</i>	<i>robur</i>	English Oak	540	12	Fair	Fair	Fair	Mature	Minor deadwood, Suppressed canopy	1 - Low	1. Less than 15cm	1 - Occasional	3	Pruning	Remove deadwood, Perform crown works
12949	<i>Pittosporum</i>	<i>undulatum</i>	Sweet Pittosporum	270	8	Good	Fair	Fair	Mature	Self sown or sucker, Weed species	1 - Low	1. Less than 15cm	1 - Occasional	3	Removal	Remove tree
12960	<i>Quercus</i>	<i>robur</i>	English Oak	140	8	Good	Fair	Good	Semi mature	Form could be improved, Suppressed canopy	1 - Low	1. Less than 15cm	1 - Occasional	3	No Works Required	No work required
12961	<i>Pittosporum</i>	<i>undulatum</i>	Sweet Pittosporum	250	9	Fair	Good	Fair	Semi mature	Weed species	1 - Low	1. Less than 15cm	1 - Occasional	3	Removal	Remove tree
12967	<i>Syzygium</i>	<i>australis</i>	Syzygium sp.	180	6	Fair	Fair	Fair	Semi mature	Dieback in canopy, Suppressed canopy	1 - Low	1. Less than 15cm	1 - Occasional	3	Pruning	Remove deadwood, Monitor health
12968	<i>Ficus</i>	<i>macrophylla</i>	Moreton Bay Fig	520	11	Good	Fair	Good	Semi mature	Bifurcated form, Minor deadwood	1 - Low	1. Less than 15cm	1 - Occasional	3	No Works Required	Monitor attachments, No work required
12969	<i>Syzygium</i>	<i>smithii</i>	Lilly Pilly	290	8	Poor	Poor	Fair	Semi mature	Co dominant stems, Dieback in canopy, Multiple stems	1 - Low	1. Less than 15cm	1 - Occasional	3	Pruning	Remove deadwood, Formative prune
12970	<i>Pittosporum</i>	<i>undulatum</i>	Sweet Pittosporum	240	7	Good	Fair	Fair	Semi mature	Co dominant stems, Self sown or sucker, Weed species, Represents a group of likely self sown weed species	1 - Low	1. Less than 15cm	1 - Occasional	3	Removal	Remove tree
12973	<i>Brachychiton</i>	<i>populneus</i>	Kurrajong	280	9	Good	Fair	Fair	Semi mature	Bifurcated with swelling and included bark, Co dominant stems	1 - Low	1. Less than 15cm	1 - Occasional	3	No Works Required	Monitor attachments, No work required
12976	<i>Photinia</i>	<i>robusta</i>	Red Leaved Photinia	250	6	Good	Fair	Fair	Mature	Co dominant stems, Decay in stem , Form could be improved	1 - Low	1. Less than 15cm	1 - Occasional	3	No Works Required	Monitor decay, Monitor health, No work required
12979	<i>Quercus</i>	<i>canariensis</i>	Algerian Oak	340	9	Good	Fair	Fair	Semi mature	Co dominant stems	1 - Low	1. Less than 15cm	1 - Occasional	3	No Works Required	Monitor attachments, No work required

Tree #	Genus	Species	Common Name	DBH (mm)	Height (m)	Health	Structure	Condition	Age	Observations	Failure Potential	Size of Part	Target Occupancy	Hazard Score	Works Required	Recommended Works
12980	<i>Leptospermum</i>	<i>confertus</i>	Queensland Brush Box	550	10	Fair	Fair	Fair	Mature	Bifurcated form, Dieback in canopy, Minor deadwood, Multiple stems	1 - Low	1. Less than 15cm	1 - Occasional	3	Pruning	Remove deadwood, Perform crown works, Monitor health
12981	<i>Ficus</i>	<i>macrophylla</i>	Moreton Bay Fig	290	13	Good	Fair	Fair	Semi mature	Decay in stem , Previously failed limbs	1 - Low	1. Less than 15cm	1 - Occasional	3	No Works Required	Monitor decay, No work required
12984	<i>Quercus</i>	<i>canariensis</i>	Algerian Oak	470	14	Good	Fair	Fair	Mature	Bifurcated form, Co dominant stems, Minor deadwood	1 - Low	1. Less than 15cm	1 - Occasional	3	No Works Required	No work required
12992	<i>Quercus</i>	<i>canariensis</i>	Algerian Oak	260	13	Good	Fair	Fair	Semi mature	Minor deadwood, Suppressed canopy	1 - Low	1. Less than 15cm	1 - Occasional	3	Pruning	Remove deadwood, Perform crown works
12993	<i>Pittosporum</i>	<i>undulatum</i>	Sweet Pittosporum	180	9	Fair	Fair	Fair	Semi mature	Decay in stem , Self sown or sucker, Weed species	1 - Low	1. Less than 15cm	1 - Occasional	3	Removal	Remove tree
12996	<i>Quercus</i>	<i>canariensis</i>	Algerian Oak	830	14	Fair	Fair	Fair	Mature	Dieback in canopy, Minor deadwood	1 - Low	1. Less than 15cm	1 - Occasional	3	Pruning	Remove deadwood, Perform crown works
13007	<i>Quercus</i>	<i>canariensis</i>	Algerian Oak	460	14	Good	Fair	Fair	Mature	Decay in stem , Minor deadwood	1 - Low	1. Less than 15cm	1 - Occasional	3	Pruning	Remove deadwood, Perform crown works
13014	<i>Quercus</i>	<i>robur</i>	English Oak	300	12	Fair	Fair	Fair	Semi mature	Dieback in canopy, Minor deadwood	1 - Low	1. Less than 15cm	1 - Occasional	3	Pruning	Remove deadwood, Perform crown works, Monitor health
13019	<i>Crataegus</i>	<i>sp.</i>	Crataegus sp.	190	5	Fair	Fair	Fair	Mature	Basal wound present, Decay in stem	1 - Low	1. Less than 15cm	1 - Occasional	3	No Works Required	Monitor decay, No work required



### Appendix 3 – Assumptions and Limiting Conditions

- 1 McLeod Trees Pty Ltd contracts with you on the basis that you promise that all legal information which you provide, including land title and ownership of property, are correct. McLeod Trees Pty Ltd is not responsible for verifying or ascertaining any of these issues.
- 2 McLeod Trees Pty Ltd contracts with you on the basis that you promise that all affected property complies with all applicable statutes and subordinate legislation.
- 3 McLeod Trees Pty Ltd will take all reasonable care to obtain necessary information from reliable sources and to verify data. However, McLeod Trees Pty Ltd neither guarantees, nor is responsible for, the accuracy of information provided by others.
- 4 If, after delivery of this report, you later require a representative of McLeod Trees Pty Ltd to attend court to give evidence or to assist in the preparation for a hearing because of this report, you must pay an additional hourly fee at our then current rate for expert evidence.
- 5 Alteration of this report invalidates the entire report.
- 6 McLeod Trees Pty Ltd retains the copyright in this report. Possession of the original or a copy of this report does not give you or anyone else any right of reproduction, publication or use without the written permission of McLeod Trees Pty Ltd.
- 7 The contents of this report represent the professional opinion of the consultant. McLeod Trees Pty Ltd's consultancy fee for the preparation of this report is in no way contingent upon the consultant reporting a particular conclusion of fact, nor upon the occurrence of a subsequent event.
- 8 Sketches, diagrams, graphs and photographs in this report are intended as visual aids, are not to scale unless stated to be so, and must not be construed as engineering or architectural reports or as surveys.
- 9 Unless expressly stated otherwise:
  - 9.1 The information in this report covers only those items which were examined and reflects the condition of those items at the time of the inspection.
  - 9.2 Our inspection is limited to visual examination of accessible components without dissection, excavation or probing. There is no warranty or guarantee, express or implied, that even if they were not present during our inspection, problems or defects in plants or property examined may not arise in the future.
- 10 This agreement supersedes all prior discussions and representations between McLeod Trees Pty Ltd and the client on the subject and is the entire agreement and understanding between us.